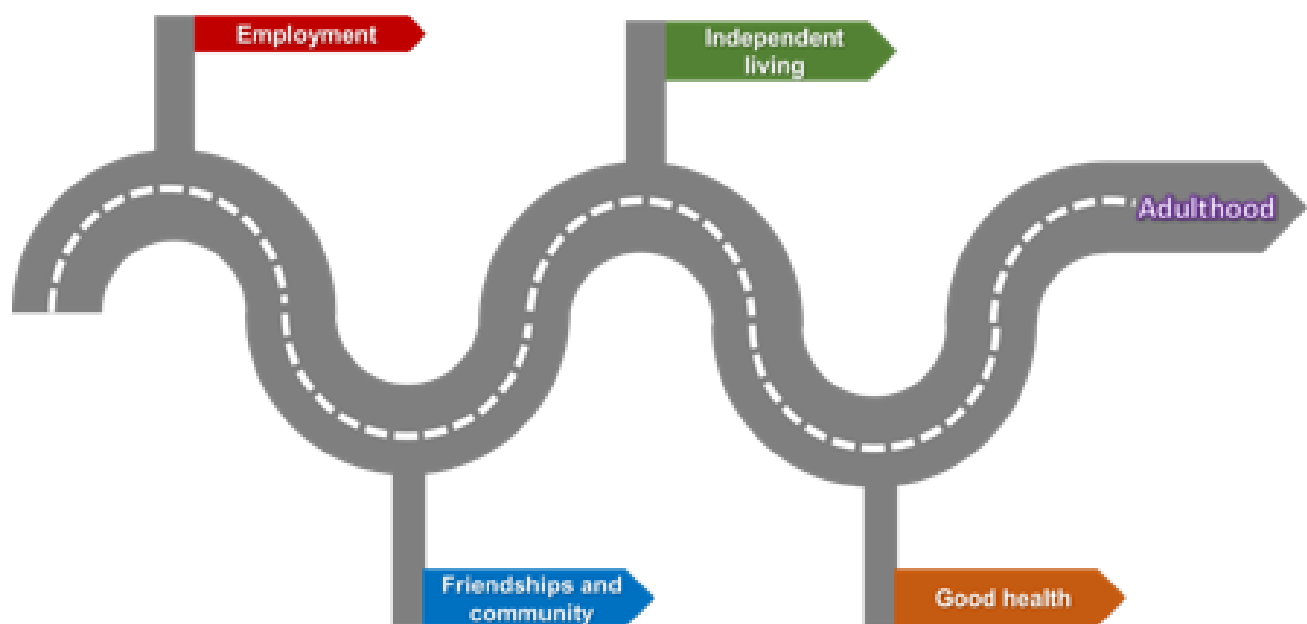




The Peterborough Post-16 Education Offer

A guide to further courses and pathways for learners with Special Educational Needs and Disabilities over 16 years old in Peterborough and surrounding area

Academic year 2021-22



Preparing for
Adulthood



Created as part of the Preparing for Adulthood programme in Peterborough

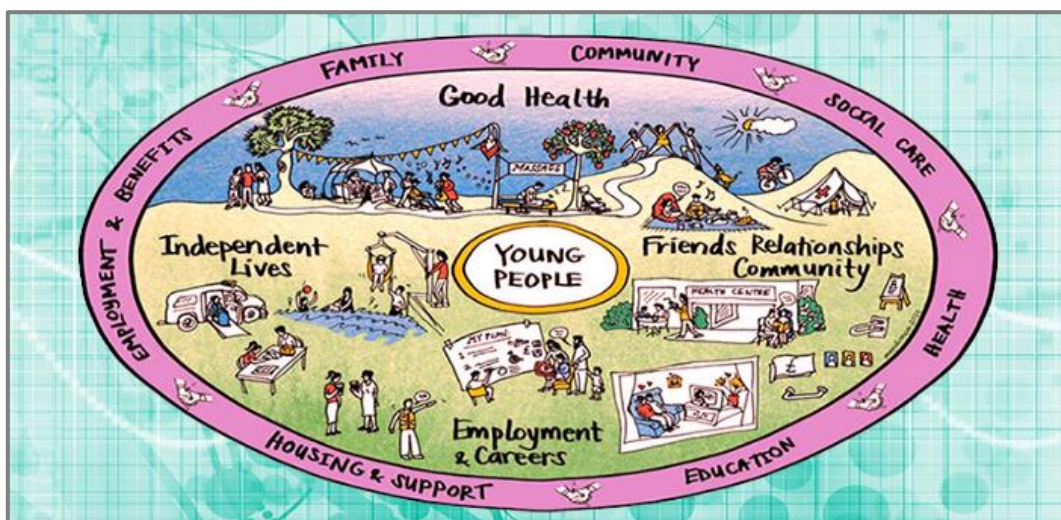
Introduction – now I am 16 or over

This guide is an overview of the various education and training options open to young adults who have special educational needs and disability when making a post 16 or post 19 transition.



If you have an Education, Health and Care Plan (EHCP) the following [video](https://youtu.be/mrYloacGnLI) (<https://youtu.be/mrYloacGnLI>) may help you to understand how you can get involved with planning your future once you are 16.

If you do not have an EHCP, but require support for your education in school or college (SEN Support), you can get involved with planning your future using your 'personal profile'; this is held by the SENCO at your school or college.



This picture is from an organisation called Preparing for Adulthood and helps identify the four key themes (in the large circle) that help young adults with SEND get ready for adult life and lists some of the people or services that can help (those in the purple outer circle).

Peterborough

Post 16 Education Offer

This guide covers several topics around education options for young adults over 16 years:

- How long do I have to be in education or training?
- What type of qualifications are there?
- What types of training are there?
- Where can I study in Peterborough?
- Courses available at Special Schools and Colleges
- Further information

How long do I have to be in education or training?

The law requires all young adults in England to continue in education or training until their 18th birthday. This can be through:

- Full time study in a school, college or with a training provider
- Full time work or volunteering combined with part time education or training leading to a relevant qualification
- An apprenticeship
- A traineeship
- A supported internship

Every young adult between 16-17 years old is entitled to an offer of a suitable place of learning by the end of September, to continue in education or training the following year. The government places a duty on young adults aged 16-17 who do not have sufficient level 3 qualifications to continue in education or training until their 18th birthday.

Young adults with an Education, Health and Care Plan (EHCP) must have the same access to further education until they are 25 years old. That is, they do not have to pay for their courses at college providing they are making progress.

For more information please see the government guide: Participation of young people in education, employment or training -

<https://www.gov.uk/government/publications/participation-of-young-people-education-employment-and-training>

What types of qualifications are there?

There are lots of qualifications at many different levels, some specific to vocations or ways of work. The table below describes the national qualifications levels. The government is conducting a review of post 16 qualifications at level 3 and below in England and therefore this information may change

National Qualification Level	National Curriculum (NC) Level	Vocational level
Pre entry	P-Levels (to be replaced with the Engagement Model from Sept 2020)	Life Skills
Entry Level 1	NC Level 1 Functional Skill	Foundation learning Entry Level Award Certificate Diploma Life skills
Entry Level 2	NC Level 2 Functional Skills	Foundation learning Entry Level Award Certificate Diploma Life skills
Entry Level 3	NC Level 3 Functional Skills	Foundation learning Entry Level Award Certificate Diploma Life skills
Level 1	GCSE Grades 3-1 or D-G	Foundation Learning Traineeships Award Certificate Diploma
Level 2	GCSE Grade 9-4 or A*-C	Intermediate Apprenticeships Level 2 Diplomas NVQ Level 2
Level 3	A-Levels	Advanced Apprenticeships Level 3 Diplomas Extended Diplomas NVQ 3
Level 4	Foundation Degree (Higher Education)	Higher Apprenticeships NVQ Levels 4
Level 5	Foundation degree (Higher Education)	Higher Apprenticeships NVQ Levels 5
Level 6	Undergraduate degree (Higher Education)	
Level 7	Masters degree (Higher Education)	
Level 8	PhD (Higher Education)	

What types of training are there?

In School / College	Mixture of School / College and Workplace
<p>Study programmes (16-19 year olds)</p> <ul style="list-style-type: none"> • Helps working towards qualifications • You can choose the qualifications and skills you work towards • Helps you develop your employability • Course includes maths, English, citizenship and work experience • Mostly college based with some work experience is possible 	<p>Apprenticeships (16+ years old)</p> <ul style="list-style-type: none"> • Gain qualifications and work experience • Usually 4 days with employer and 1 day at college • Paid! (minimum salary is £3.90 per hour (due to increase in April 2020) for under 19 year olds – Many employers pay more than this) • Available for all ability levels • Can last between 1 and 4 years
<p>Mainstream Courses (16+ years old)</p> <ul style="list-style-type: none"> • Mostly school / college based • Mostly aimed towards qualifications level 2 or 3 • Mostly based with the majority in school / college. • SEND can be supported through high quality teaching and student support services in school/college 	<p>Supported internships (16-24 years old)</p> <ul style="list-style-type: none"> • Structured study programmes focusing on functional skills and courses relevant to placement • Based mostly with employer • Between 6 months – 1 year • Unpaid work placement at least 6 months • Can lead to paid employment • Job coaching to support learners in the workplace
<p>Bespoke courses</p> <ul style="list-style-type: none"> • These are very limited courses • For students who have complex needs that make it very difficult for them to take part in college courses 	<p>Traineeships (16-24 year olds)</p> <ul style="list-style-type: none"> • Work preparation training, often includes; work experience tuition in English & Maths • At least 6 months • Unpaid

Opportunities outside of work and school/college:

Volunteering (Any age)

- Unpaid
- A great way to develop skills, meet new people, and make a difference to other people
- Opportunities available for all abilities, ages and levels of commitment in Peterborough.

Higher Education (18+ years old)

- Usually working towards Level 4-8 qualifications (foundation, undergraduate and postgraduate degrees)
- Usually unpaid and requiring tuition fees (often covered by tuition fee loans)
- Not eligible for EHC Plans but Universities have a duty to make reasonable adjustments for disabled students.
- Students may qualify for Disabled Students Allowance to fund specific help such as note takers, sign language interpreters or specialist IT equipment

Where can I study local to Peterborough?

Most Colleges and Sixth Forms in secondary schools in our area offer a wide range of mainstream courses (A-Levels, BTECs, Levels 2+). For more details about these and entry requirements, please follow the links to their prospectus.

	Name	Website
Colleges:	City College Peterborough Stamford College Peterborough College	www.citycollegepeterborough.ac.uk www.stamford.ac.uk www.peterborough.ac.uk
Sixth Forms / Secondary Schools:	Arthur Mellows Village College Greater Peterborough University Technical College Hampton College Jack Hunt School Ken Stimpson Community School The King's (The Cathedral) School Nene Park Academy Ormiston Bushfield Academy The Peterborough School Queen Katharine Academy Stanground Academy St John Fisher Catholic High School Thomas Deacon Academy	www.arthurmellows.org www.gputc.com www.hamptoncollege.org.uk www.jackhunt.peterborough.sch.uk www.kscs.org.uk www.kings.peterborough.sch.uk www.neneparkacademy.org www.bushfield.co.uk www.thepeterboroughschool.co.uk www.qka.education www.stangroundacademy.org www.stjohnfisherschool.org.uk www.thomasdeaconacademy.com
Special Schools:	Heltwate School (Olympic College) Marshfields School Lime Academy Orton	www.heltwate.co.uk www.marshfields.co.uk www.limeacademyorton.org
Universities:	University Centre Peterborough Anglia Ruskin University For more information about searching and applying for Higher Education, please see UCAS (Universities and Colleges Application System)	www.ucp.ac.uk www.aru.ac.uk www.ucas.com

Courses available in special schools and colleges

Please have a look at what is available on the next few pages. These courses are updated every year.

How long do courses last? How many days a week could I be studying?

- Most courses last at least one academic year (September-July) but may take longer depending on a student's needs
- Special schools and sixth forms normally plan for 5 days of studying / lessons. The schools offer a 5 day curriculum made up of components from the courses below.
- Colleges normally plan for 2-4 days of lessons/studying but will support students to use the remaining days of their week for exploring the pathways into employment, healthy living, friendships and community and independent living

How do I get on a course?

- If you are interested in a course, please see the prospectus or contact the school / college for more information about entry requirements and how to apply.
- Your school or college can help you with this

Please be aware that **admissions requirements for some of our post 16 special schools is under review.** Contact schools for further updates

The Peterborough Post 16 Education Offer: Courses for learners with SEND - Special Schools

Heltwate School (Olympic College)

Website: www.heltwate.co.uk

Telephone: 01733 262878

Course	Level	Potential progression
ASDAN: - Personal Progress Units - Work right	Entry Level 1	<ul style="list-style-type: none"> • Vocational courses • Independence course
EQUALS: <ul style="list-style-type: none"> • Equals moving on Curriculum • Equals moving on Maths • Equals moving on English • Equals moving on ICT 	Entry Level 1	<ul style="list-style-type: none"> • Vocational courses • Independence course
AQA Unit Awards	Pre-entry level 1 Entry level 1	<ul style="list-style-type: none"> • Vocational courses • Independence course
Duke of Edinburgh	Silver	<ul style="list-style-type: none"> • Vocational courses • Independence course

Marshfields School

Website: www.marshfields.co.uk Telephone: 01733 568058

Course	Level	Potential progression
City and Guilds Introduction to the Hospitality and Catering Industry	Level 1	<ul style="list-style-type: none"> • Hospitality level 2
ASDAN Employability	Entry 2 Award Entry 3 Certificate	<ul style="list-style-type: none"> • Entry 3 • College Level 1
ASDAN Employability Digital Computing	Level 1 Entry 2 Entry 3	<ul style="list-style-type: none"> • College Level 2 • College Level 1 • College Level 1
ASDAN Foodwise short course	Short Course	<ul style="list-style-type: none"> • College Hospitality/Food Courses
ASDAN Bronze	Entry 1	<ul style="list-style-type: none"> • Entry 2 Silver
ASDAN Silver	Entry 2	<ul style="list-style-type: none"> • Entry 3 Gold
ASDAN Gold	Entry 3	<ul style="list-style-type: none"> • College Level 1
BTECH Art	Level 1 Award Level 1 Certificate	<ul style="list-style-type: none"> • College Level 1 Certificate/Level 2 • College Level 2
BTECH Childcare	Entry 3 Level 1	<ul style="list-style-type: none"> • Childcare Level 1
BTECH Land based Studies	Entry 3 Level 1	<ul style="list-style-type: none"> • Land - based Level 1 • Land - based Level 2 (at college)
Duke of Edinburgh Award	Bronze Silver	<ul style="list-style-type: none"> • Silver • Gold
National Citizenship Service (NCS)	Award	

Marshfields School

Website: www.marshfields.co.uk/ Telephone: 01733 568058

Course	Level	Potential progression
BTECH Childcare	Entry 3 Level 1	<ul style="list-style-type: none"> • Childcare Level 1
BTECH Land based Studies	Entry 3 Level 1	<ul style="list-style-type: none"> • Land - based Level 1 • Land - based Level 2 (at college)
Duke of Edinburgh Award	Bronze Silver	<ul style="list-style-type: none"> • Silver • Gold
National Citizenship Service (NCS)	Award	
EXCEL Awards Maths-Number and Measure	Level 1 Level 2	<ul style="list-style-type: none"> • College level 2 • College GCSE Foundation then Higher
Functional Skills English	Level 1 Level 2 Level 3	<ul style="list-style-type: none"> • College Level 2/GCSE • College Entry Level 3 • College Level 1 Functional /GCSE • College Level 1 / 2 / GCSE
Maths	Entry Level 3	
IMI Introduction to Motor Vehicle Industry	Entry 3	<ul style="list-style-type: none"> • College Level 1

Lime Academy Orton

Website www.limeacademyorton.org

Telephone: 01733 391800

Course	Level	Potential progression
Engage Lime Academy curriculum	<ul style="list-style-type: none"> • Duke of Edinburgh Bronze • PfA outcomes 	Community Care pathway
Inspire Lime Academy curriculum	<ul style="list-style-type: none"> • Duke of Edinburgh Silver • NCS (National Citizenship Service) • PfA outcomes • Bespoke work experience at our Charity shop and café. 	College programme
Empower Lime Academy curriculum	<ul style="list-style-type: none"> • Duke of Edinburgh Silver • NCS (National Citizenship Service) • PfA outcomes • Bespoke work experience at our Charity shop and café. 	College programme

Courses for learners with SEND – Colleges *colleges offer a wide variety of courses. The courses listed here are pre level 2.

City College Peterborough

Telephone: 01733 761361

Website: www.citycollegepeterborough.ac.uk

Course	Level	Age	Potential progression
Step Up (Aim Award accredited)	Entry level 1 Entry level 2 Entry level 3 Level 1	16-19 years (14-25 with EHCP)	<ul style="list-style-type: none"> Occupational studies Level 1 Pathway Internship
Skills for Independence (Unaccredited- a course designed to build your confidence, self-esteem and independence.)	Pre-entry Entry level 1 Entry level 2 Entry level 3	16-19 years (14-25 with EHCP)	<ul style="list-style-type: none"> Step up Occupational studies Day Services (transition out of college)
Occupational studies (accredited with NCFE)	Entry level 1 Entry level 2 Entry level 3 Level 1	16-19 years (14-25 with EHCP)	<ul style="list-style-type: none"> Level 1 Pathway Internship Supported Internship
Vocational pathways (accredited) Pathways include: <ul style="list-style-type: none"> Business administration (Level 1 and 2) Childcare (Level 1 and 2) Health and Social Care (level 1 and 2) Hairdressing (Level 1 and 2) Barbering (Level 2, Level 1 Hairdressing required) Hospitality and Catering (Levels 1) Motor vehicle (Levels 1 and 2) Skills for creative industries (Level 1 portfolio) 	Level 1 Level 2	16-19 years (14-25 with EHCP)	<ul style="list-style-type: none"> Level 2 courses Supported internships
GAP (Getting Ahead in Peterborough)	N/A	16-19 years (14-25 with EHCP)	Any study programme course
ICE (can be accredited if appropriate)	N/A	16-19 years (14-25 with EHCP)	Any study programme course

Course	Level	Age	Potential progression
Built with those in mind that may have been out of education for a while, have significant difficulties around education or have significant needs.			
Supported internships (Can be accredited if appropriate)	Work experience	16-19 years (14-25 with EHCP)	Employment
ESOL (English for Speakers of Other Languages)	Pre-entry Entry level 1 Entry level 2 Entry level 3	16-19 years (14-25 with EHCP)	<ul style="list-style-type: none"> • Level 1 & 2 Vocational Pathways • Supported Internship courses

Stamford College

Website: www.stamford.ac.uk

Telephone: 01780 484300

Course	Level	Age	Potential progression
Exploring careers in Land-Based Industries (Animal and Horticulture) (Accredited with RARPA and Gateway Qualifications Entry Level 2 Certificate in Preparation for Employment))	Entry level 2 Entry level 3	16-19 (25 with EHCP)	<ul style="list-style-type: none"> Supported internships Transition pathways to mainstream college Employment
Exploring careers in Services Industries (Catering and retail) (Accredited with RARPA and Gateway Qualifications Entry Level 2 Certificate in Preparation for Employment))	Entry level 2 Entry level 3	16-19 (25 with EHCP)	<ul style="list-style-type: none"> Supported internships Transition pathways to mainstream college Employment
Independent living (Life and Work) (Accredited with RARPA)	Entry level 1 Entry level 2	16-19 (25 with EHCP)	<ul style="list-style-type: none"> Exploring careers courses Transition to supported living
Independent Living Skills (accredited with RARPA)	Entry level 1	16-19 (25 with EHCP)	<ul style="list-style-type: none"> Exploring careers courses Transition to supported living
Pathways (accredited with Gateway Qualifications Certificate in Progression Entry level 3)	Entry level 3	16-19 (25 with EHCP)	<ul style="list-style-type: none"> Mainstream courses in vocational area Supported Internship Employment
Supported internship (Gateway Qualifications Entry Level 3 Award in Preparation for Employment)	Entry Level 3 Level 1	18-25 with EHCP	<ul style="list-style-type: none"> Employment Apprenticeship
Bespoke timetables for learners with Vision, Hearing or dual impairments			

Peterborough College

Website: www.peterborough.ac.uk

Telephone: 0345 8728722

Course	Level	Age	Potential progression
Vocational Courses: <ul style="list-style-type: none"> • Accelerate and Accumulate (certificate in Vocational Studies) • Applied Science • Art and Design • Construction • Hair and Beauty • Bricklaying • Business • Carpentry • Catering • Sport • Uniformed Services • IT • Health, Social and Childcare • Land based Studies • Plumbing • Travel and Tourism 	Level 1	16-19 (25 with EHCP)	<ul style="list-style-type: none"> • Level 1 • Level 2 • Employment • Apprenticeship • Supported Internship
Bespoke courses	All levels where appropriate	16-19 (25 with EHCP)	<ul style="list-style-type: none"> • Vocational level 1 • Level 2 • Employment • Apprenticeship • Supported Internship
Care (accredited with Gateway)	Entry level 3	16-19 (25 with EHCP)	<ul style="list-style-type: none"> • Level 1 Health and Social
ESOL (English for Speakers of Other Languages) (Accredited with Pearson)	Pre entry Entry level 1 Entry level 2	16-19 (25 with EHCP)	<ul style="list-style-type: none"> • Further levels ESOL • Vocational courses

Course	Level	Age	Potential progression
	Entry level 3		
Skills in Hospitality and Catering (Accredited with Gateway)	Entry level 3	16-19 (25 with EHCP)	<ul style="list-style-type: none"> • Level 1 Catering • Level 2 Catering
Introduction to Vehicle Technology (accredited with IMI- Institute of the Motor Industry)	Entry level 3	16-19 (25 with EHCP)	<ul style="list-style-type: none"> • Level 1 Motor Vehicle
Personal Progression (accredited with RARPA)	Pre-entry	16-19 (25 with EHCP)	<ul style="list-style-type: none"> • Social care • Further levels of Essential Skills
Personal and Social Development (PSD) (accredited with Gateway)	Entry level 2 Entry level 3	16-19 (25 with EHCP)	<ul style="list-style-type: none"> • Next level of PSD • Supported Internship
Enterprise (accredited with Gateway)	Entry level 1 Entry level 2	16-19 (25 with EHCP)	<ul style="list-style-type: none"> • Next level of Enterprise • Supported Internship
Towards Animal Care (accredited with Gateway)	Entry level 3	16-19 (25 with EHCP)	<ul style="list-style-type: none"> • Mainstream level 1 • Supported Internship
Towards Horticulture (accredited with Gateway)	Entry level 3	16-19 (25 with EHCP)	<ul style="list-style-type: none"> • Mainstream level 1 • Supported Internship
Towards Employment (accredited with ASDAN)	Entry level 3 Level 1	16-19 (25 with EHCP)	<ul style="list-style-type: none"> • Mainstream level 1 • Employment • Supported Internship
Towards Vocational (accredited with Gateway Vocational Studies)	Entry level 3 Level 1	16-19 (25 with EHCP)	<ul style="list-style-type: none"> • Mainstream level 1
Supported Internship	N/A	16-19 (25 with EHCP)	<ul style="list-style-type: none"> • Employment

Further sources of information and guidance

Provider	Description	Contact information
Funding of students aged 16-25 with SEND	A guide with information on the way the Education and Skills Funding Agency (ESFA) and, in some cases, Local Authorities will calculate and allocate funding to institutions who provide education to young adults with SEND	https://bit.ly/3bVHCm7
16-19 Bursary Fund	<p>You could get a bursary via your college offer, to help with education-related costs if you are 16-19 years old and studying at school or college (not University) in England, on a training course.</p> <p>This would include unpaid apprenticeships if you receive Personal Independence Payment, or are in Care, are a Care leaver or receive Universal Credit. You can spend the money on things like clothing, books and other equipment for your course, transport and lunch on your study days.</p>	<p>0300 200 3300</p> <p>www.gov.uk/1619-bursary-fund/overview</p>

This document will, in time, be part 1 of a 3 - part document: *Peterborough Post 16 Education offer and Preparation for Adulthood Pathways*