

Heltwate Round up

Autumn 2017

www.heltwate.co.uk



A Note from the Head

I have had the privilege of showing prospective parents around our school this week. Seeing a school in action is the very best - indeed the only way to assess how a school actually is. Wandering round with parents forces you to see things as they actually are and it made me feel very proud indeed. We saw the best teaching and learning, the best relationships that I have seen in my career. Our staff are passionate about their classes and have high expectations of their students. Better than that, it is clear that they like the children and enjoy working with them - this brings about a mutual respect and understanding which underpins everything: the foundation of a very successful school.

My thanks to all the parents and carers for attending Harvest Assembly. I thought it was fantastic. This is my fourth and they amaze me every time. The downside of being so popular is we couldn't get all your children and yourselves into the hall at once. This really is an indication of how quickly we are expanding. I know that staff were touched by your support and the smiles. I believe that teaching is the biggest thrill and privilege. Have a lovely half term break.



Adam Brewster

Contacting School

The school office is open every day from 8.00 a.m. – 4.00 pm, which is also the times when the phones are answered. Please be aware if you want to talk to your child's teacher during the school day that it will not always be possible to be put through. We recommend that you ring during the lunch break or at 3.15 pm.

It is vitally important that we are able to contact you or a member of your family in an emergency. Please keep us up to date with any changes of address AND PHONE NUMBERS

Duke of Edinburgh

We have expanded our Duke of Edinburgh involvement within school to be a part of our KS4 curriculum for all pupils. They are getting involved in various activities including Judo lessons and volunteering at Welland Mews sheltered housing.



Autumn Diary Dates

Tuesday 17th & Wednesday 18th October

Parents Evening – Appointments from 3.30pm

Thursday 19th October

Break up for half term

Friday 20th October

SCHOOL CLOSED TO

PUPILS FOR STAFF TRAINING

Monday 30th October

Return to school



Charity



A big thank you for your support for the Macmillan Coffee Morning – as always the hall and library were packed with family and friends and through your generosity we have raised well over £800 to date.

Road Safety

It is essential that you keep to the 5mph limit when driving through the school site and please park with due care and consideration.

Term Dates

Autumn Term 2017

Opens Wednesday 6th September

SCHOOL CLOSED TO PUPILS – Friday 20th October

Half Term Mon 23rd – Fri 27th October

Closes Tuesday 19th December at 3.00 p.m.

Spring Term 2018

Opens Wednesday 3rd January

Half Term Mon 12th – Fri 16th February

Closes Thursday 29th March at 3.00 p.m.

Summer Term 2019

Opens Monday 16th April

May Day Monday 7th May

Half Term 28th May – 1st June

Closes Friday 20th July at 1.00 p.m.

Transport

You need to ensure your child is ready for the school transport each morning. Please do not contact us at school if there are any changes, issues or queries with your child's transport as we are not involved with the transport. You need to contact the Passenger Transport Office at Peterborough City council on 01733 747474.

Attendance

Our attendance up to 11 October is 93.4% which is a big improvement from this time last year which was 90.3%. We are so pleased and thank you for your support in ensuring your child's attendance.

We understand that illness can of course be unavoidable and then the resulting absence from school. We may in some cases request from you medical evidence of persistent or lengthy illness absences.

Pupils who miss lessons increase the risk of falling behind and also miss the opportunities to develop their friendships and social skills. If you are experiencing difficulties with your child's attendance please do contact our attendance officer Helena Richmond at school so we can discuss any necessary support.

Please call school by 9.30 a.m. so the absence can be recorded. If you do not ring to inform us of your child's absence we will make every attempt to make telephone contact with you to find out why your child is not in school. If we do not know why your child is absent it will be recorded as unauthorised and repeated unauthorised absences are now liable to further action from the local authority.

We would encourage any medical, dental or hospital appointments to take place **out of school time** wherever possible in order not to disrupt the school day. Every effort must be made to return pupils to school the same day if it is a local routine appointment or it will be recorded as an unauthorised absence. Shopping trips, days off for a birthday or other such events will be recorded as unauthorised.

As a reminder, school starts at 8.40am. Registers will be kept open until 9.00 am. Pupils arriving after this time will be marked as late unless there is a specific reason; such as transport issues. School ends at 3.00 pm and if you collect your child please wait by the green gates for your child to be dismissed.

Leave of Absence

Heltwate School will authorise Leave of Absence only under exceptional circumstances. The Governors of Heltwate School consider that 'exceptional' circumstances do not occur regularly by definition and are one off occasions.

Requests for exceptional leave of absence should be made at least 4 school weeks in advance and will be considered on an individual basis by the Headteacher as delegated by the Governing Body (or in their absence by a Deputy Headteacher).

Attendance

Class attendance from September up to 11th October:

Amber	93.3%	Purple	94.2%
Blue	96.9%	Rainbow 1	95.5%
Coral	97%	Rainbow 2	93.2%
Green	93.1%	Rainbow 3	95.2%
Jade	96.8%	Rainbow 4	89%
Olympic College 1	97.8%	Ruby	97%
Olympic College 2	96%	Saffron	91%
Orange	96.7%	Violet	91.7%
Pink	96.2%	Yellow	92.3%

Well done to Blue, Coral, Jade, OC1, OC2, Orange, Pink and Ruby for achieving over 96% - fantastic!
The whole school attendance is 93.4%.

School Uniform

To refresh your memories, our uniform is made up of a white polo shirt, grey or black trousers or skirts and navy blue sweatshirt or cardigan. We ask that your children wear black shoes or plain black leather look trainers.

Sweatshirts, cardigans or reversible fleeces can be ordered from school. The sizes for all items are ages 3-4, 5-6, 7-8, 9-10, 11-12 and 13. Adult small, medium, large and extra large The current prices are below:

Sweatshirts, all sizes	£10.00
Cardigans, all sizes	£11.50
Junior Reversible Fleeces	£14.00
Adult Reversible Fleeces	£16.00

Uniform is now ordered fortnightly from our stockists. Please contact the school office for more information or to place an order.

School Dinners

A new dinner menu has been sent home with pupils this week so please look out for it in your child's bag. It will run from after October half term until the Easter holidays. It is also available to view on our website. *Some menus or items on the menu may be subject to change.*

Junior Dinners (School Years 1-6) are £2.10 a day or £10.50 a week
Senior Dinners (School Years 7-14) are £2.30 a day or £11.50 a week

Please send money into school in advance as we cannot let unpaid dinner money build up.

We need to know **by 10.30 a.m.** if you are bringing your child into school late following an appointment and still want them to have a school dinner.

Class News

Olympic College

Olympic College, will be opening the OC Munchbox cafe on Thursday 2 November, between 10 - 11.15 am. We have been busy baking lots of yummy treats for the cafe, look out for favourites such as lemon drizzle cake and flapjack.

During our personal social development sessions, we have been working with Debbie Drew from the DHiverse charity to develop our relationship skills. We have also worked a lot on our personal hygiene.

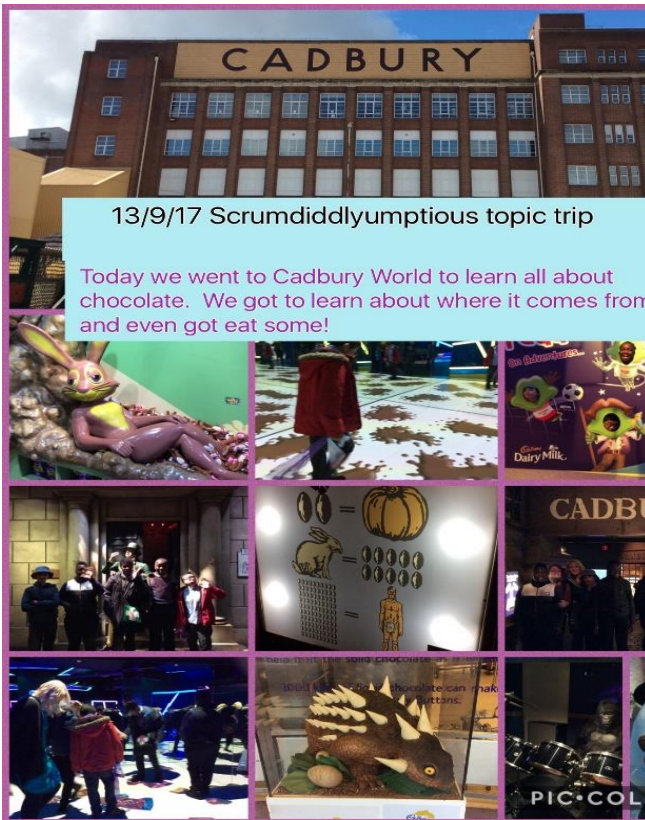
Some of our students have been visiting other colleges, to start to think about life after Heltwate School as they are getting older.

Purple

During this term, Purple Group have been finding out lots about different sounds. In these photos, Abdul Rahim and Scott are playing trumpets, which they made from scrap materials. The pupils had great fun making their own trumpets. During this term, Purple Group have been finding out lots about different sounds. In these photos, Abdul Rahim and Scott are playing trumpets, which they made from scrap materials. The pupils had great fun making their own trumpets.



Rainbow 4



Heltwate Post team



We would like to introduce you to the Heltwate Post team who are now responsible for taking the school mail to the post box every day. They are doing a great job!

New Beginnings on the Allotment

Over the summer holidays, volunteers have been busy working on the outdoor classroom and allotment, to make it an exciting and safer place for all to enjoy. Many people and companies donated time and resources to make the revamp of the allotment a success. I would like to say a very big thank to all that gave up their time over the work weekends.

Every class has a space to grow their own vegetables and flowers, hopefully everyone will get a change to eat their produce over the coming year.

We will be having a grand opening in the future, which all will be invited to, when the classes have had an opportunity to get growing. We will be having "grow your own" competitions too.

The allotment is a large area and needs continual work to keep it looking as good as the volunteers have left it. We will have regular work party days, which any help you can offer will be gratefully received. Jobs range from a little light weeding to keeping some bushes trimmed back. Look out for upcoming events.

